

INDUCTION MOTORS WITH CONICAL ROTOR FOR HOISTS - SERIES KK and KG

The conical electric motors for hoists can be divided into two groups according to their driving mechanisms:

1. Series KK - for operating the driving mechanism of rope hoists
2. Series KG - for main lifting mechanism of rope or chain hoists

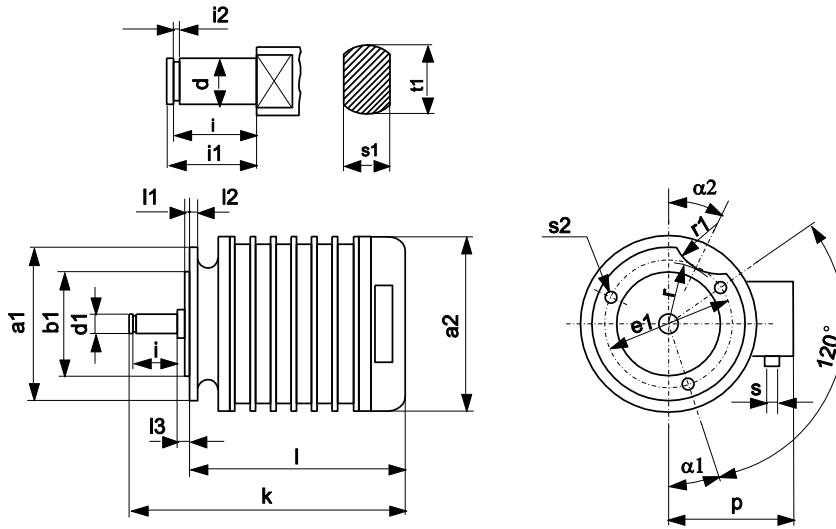
THREE-PHASE ELECTRIC MOTORS - KK

| Bemessungsleistung Rated Output | | Typ Type | 380-400V Betriebswerte bei Bemessungsleistung Parameters at Rated Output | | Als Vielfaches der Betriebswerte Starting Characteristics | | | | | Gewicht Weight |
|------------------------------------|------|-------------|--|------------------|--|------------------------------------|-----------------------------------|---|------------------------|-------------------|
| | | | U _{pm} Rotations | Strom Current | Anlaufstrom Starting Current | Anlaufmoment Starting Torque | Bremsmoment Breaking Torque | Rel. Einschalt dauer Oper.Regime | Anzug/St Starting/h | |
| kW | HP | | min ⁻¹ | A | A | Nm | Nm | % | h ⁻¹ | kg |
| 0.37 | 0.50 | KK1405-4H | 1250 | 1.5 | 5.0 | 7.65 | 2.35 | 40 | 60 | 15.5 |
| 0.25 | 0.34 | KK1405-6H | 870 | 1.2 | 3.5 | 6.3 | 1.96 | 40 | 60 | 15.5 |
| 0.55 | 0.75 | KK1407-4H | 1280 | 2.1 | 8.0 | 11.75 | 2.94 | 40 | 60 | 18.2 |
| 0.37 | 0.50 | KK1407-6H | 860 | 1.8 | 4.9 | 10.8 | 2.45 | 40 | 60 | 18.2 |

TWO-SPEED THREE-PHASE ELECTRIC MOTORS - KK

| Bemessungsleistung Rated Output | | | | Typ Type | 380-400V Betriebswerte bei Bemessungsleistung Parameters at Rated Output | | | | Als Vielfaches der Betriebswerte Starting Characteristics | | | | | | | Gewicht Weight | |
|------------------------------------|------|-------|-------|-------------------|--|------|------------------|-----|--|-----|------------------------------------|-----|-----------------------------------|--|-----|-------------------|------------------------|
| | | | | | U _{pm} Rotations | | Strom Current | | Anlaufstrom Starting Current | | Anlaufmoment Starting Torque | | Bremsmoment Breaking Torque | Rel. Einschalt dauer Oper.Regime | | | Anzug/St Starting/h |
| 2p1=12 | | 2p2=4 | | 2p1 | 2p2 | 2p1 | 2p2 | 2p1 | 2p2 | 2p1 | 2p2 | Nm | | 2p1 | 2p2 | h-1 | |
| kW | HP | kW | HP | min ⁻¹ | | A | | A | | Nm | | | Nm | % | | | |
| 0.06 | 0.08 | 0.18 | 0.245 | KK1405-12/4AH | 450 | 1440 | 1.4 | 1.2 | 1.55 | 3.4 | 3.8 | 3.8 | 0.9 | 15 | 30 | 180 | 15.5 |
| 0.11 | 0.13 | 0.37 | 0.493 | KK1407-12/4AH | 400 | 1340 | 1.7 | 1.4 | 2.2 | 5.0 | 6.5 | 6.5 | 2.4 | 15 | 30 | 180 | 18.2 |
| 0.11 | 0.13 | 0.25 | 0.335 | KK1407-12/6AH | 400 | 860 | 1.7 | 1.4 | 2.2 | 2.8 | 6.5 | 6.5 | 2.4 | 15 | 30 | 180 | 18.2 |

Overall and Joining Dimensions



| Typ, Type | Abmessungen, Dimensions [mm] | | | | | | | | | | | | | | | | | | | | | | |
|--|--------------------------------|-----|-----|----|------|----|----|------|----|-----|----|----|------|-----|-----|-----|----|----|-----|----|----|------------|------------|
| | a1 | a2 | b1 | d | d1 | s1 | t1 | i | i1 | i2 | l1 | l2 | l3 | k | l | p | s | s2 | e1 | r | r1 | α_1 | α_2 |
| KK1405-4,6AH | 165 | 170 | 100 | 12 | 11.4 | 13 | 17 | 17.3 | 19 | 1.3 | 5 | 8 | 16.5 | 235 | 190 | 112 | 11 | 9 | 150 | 34 | 67 | 10 | 23 |
| KK1405-12/4AH | 135 | 170 | 60 | 10 | 9.4 | 11 | 17 | 17.3 | 19 | 1.3 | 6 | 8 | 10.5 | 226 | 195 | 112 | 11 | 9 | 120 | - | - | 36 | - |
| KK1407-4,6AH KK1407-12/4AH KK1407-12/6AH | 165 | 170 | 100 | 12 | 11.4 | 13 | 17 | 17.3 | 19 | 1.3 | 5 | 8 | 16.5 | 260 | 215 | 112 | 11 | 9 | 150 | 34 | 67 | 10 | 23 |

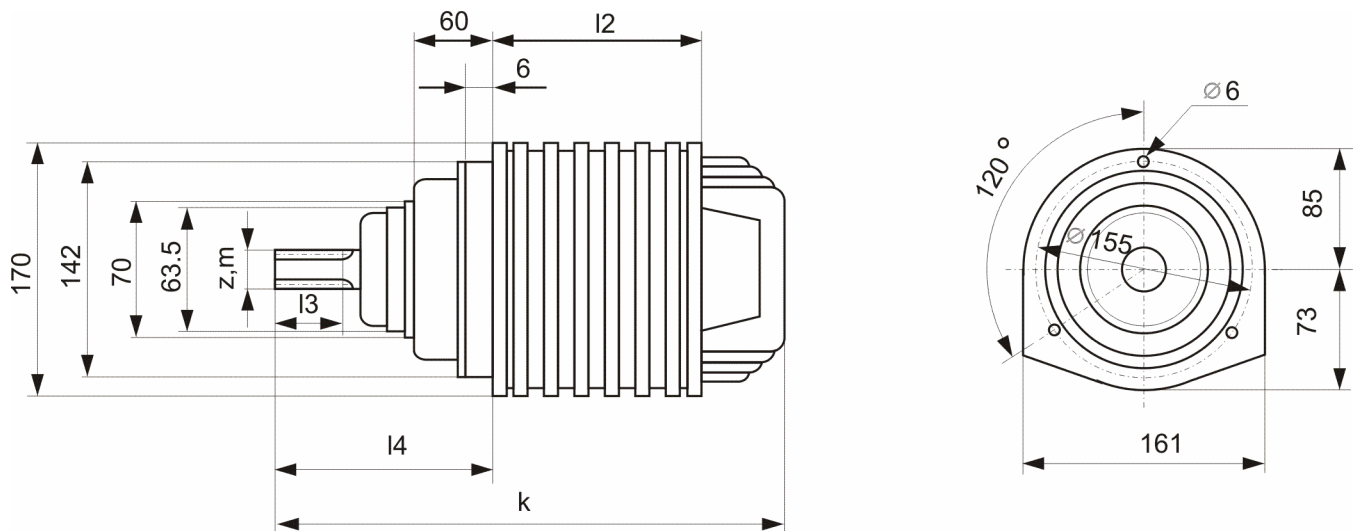
THREE-PHASE ELECTRIC MOTORS - KG

| Bemessungsleistung Rated Output | | Typ Type | Betriebswerte bei Bemessungsleistung Parameters at rated output | | | Anlaufverhalten, Starting performance | | | | | Gewicht Weight |
|------------------------------------|-------|--------------|--|---------------------|------------------|---------------------------------------|---------------------------------|--------------------------------|--|-------------------------|-------------------|
| | | | Drehzahl Speed | Spannung Voltage | Strom Current | Anlaufstrom Starting current | Anlaufmoment Starting torque | Bremsmoment Breaking torque | Rel. Einschalt- dauer Oper. regime | Anzug/Start Start./h | |
| kW | HP | | min ⁻¹ | V | A | A | Nm | Nm | % | h ⁻¹ | kg |
| 0.36 | 0.49 | KG 1405-4 | 1320 | 380 | 1.2 | 4.3 | 4.0 | 4.4 | 25 | 120 | 8.7 |
| 0.36 | 0.49 | KG II 1405-4 | 1320 | 380 | 1.1 | 4.0 | 4.5 | 3.7 | 40 | 240 | 8.8 |
| 0.54 | 0.729 | KG I 1405-4 | 1320 | 380 | 1.9 | 6.5 | 10.0 | 6.8 | 25 | 120 | 9.0 |

TWO-SPEED THREE-PHASE ELECTRIC MOTORS - KG

| Bemessungsleistung Rated Output | | | | TYP Type | Betriebswerte bei Bemessungsleistung Parameters at rated output | | | Anlaufverhalten, Starting performance | | | | | | | Gewicht Weight | | | |
|------------------------------------|------|--------------------|------|-----------------|--|-----------------|---------------------|---------------------------------------|-----------------|---------------------------------|-----------------|---------------------------------|-----------------|--------------------------------|-------------------|--|-----------------|-------------------------|
| | | | | | Drehzahl Speed | | Spannung Voltage | Strom Current | | Anlaufstrom Starting current | | Anlaufmoment Starting torque | | Bremsmoment Breaking torque | | Rel. Einschalt- dauer Oper. regime | | Anzug/Start Start./h |
| 2p ₁ =12 | | 2p ₂ =4 | | | 2p ₁ | 2p ₂ | | 2p ₁ | 2p ₂ | 2p ₁ | 2p ₂ | 2p ₁ | 2p ₂ | | 2p ₁ | 2p ₂ | | |
| kW | HP | kW | HP | | min ⁻¹ | | V | A | | A | | Nm | | Nm | % | | h ⁻¹ | kg |
| 0.11 | 0.15 | 0.36 | 0.49 | KG 1405-12/4 | 400 | 1320 | 380 | 1.9 | 1.2 | 2.5 | 4.3 | 4.8 | 4.0 | 4.4 | 10 | 25 | 120 | 8.9 |
| 0.11 | 0.15 | 0.36 | 0.49 | KG II 1405-12/4 | 400 | 1320 | 380 | 2.0 | 1.4 | 2.5 | 4.3 | 4.8 | 4.0 | 3.7 | 10 | 40 | 240 | 9.2 |

Overall and Joining Dimensions



| Typ, Type | Abmessungen, Dimensions [mm] | | | | | |
|---|------------------------------|----|-----|-----|----|------|
| | l2 | l3 | l4 | k | z | m |
| KG 1405-12/4 KG 1405-4 KG I, II 1405-4 KG II 1405 - 12/4 | 70 | 18 | 115 | 226 | 14 | 1.25 |